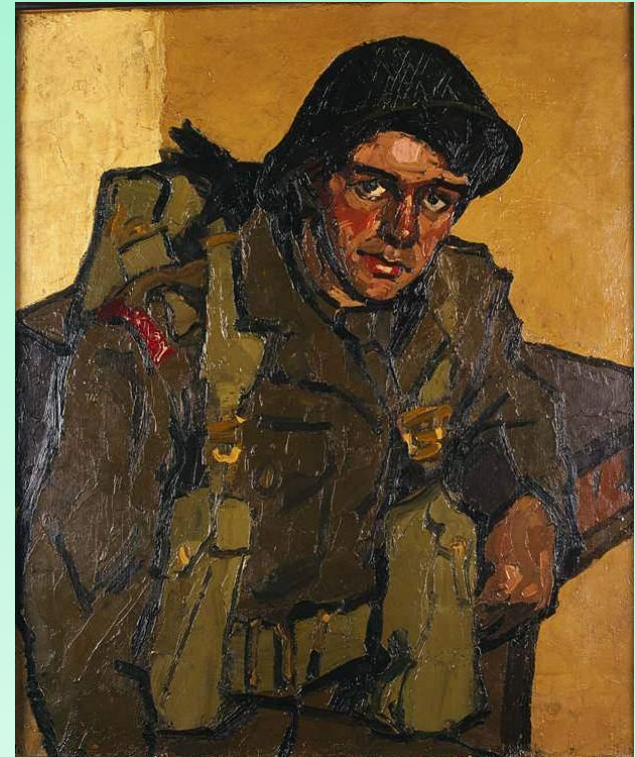
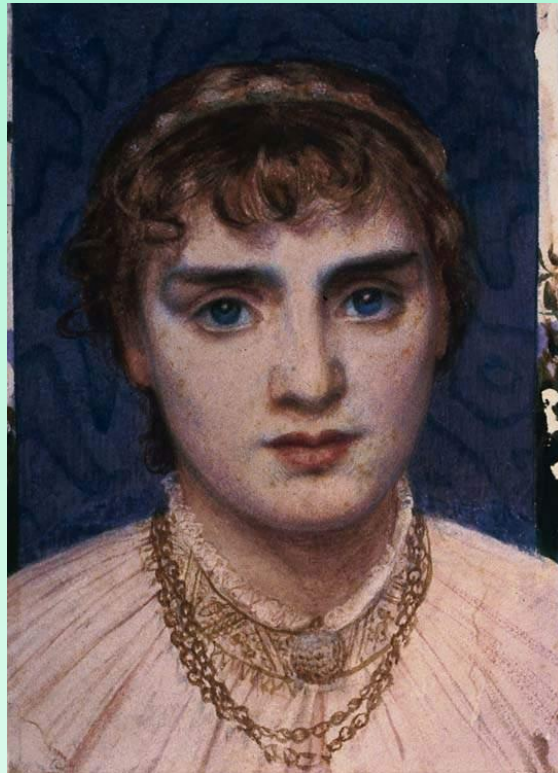


Drawing Portraits

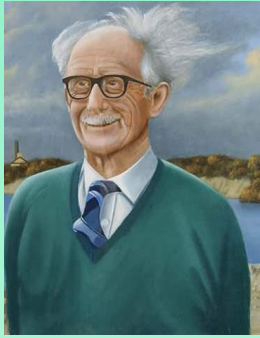


Learning Objective- How to draw a portrait step- by- step, using correct proportions

Before beginning to draw a portrait, the subject must be looked at carefully.

Look closely at the next portraits. Pay attention to how the facial features are different in each one.

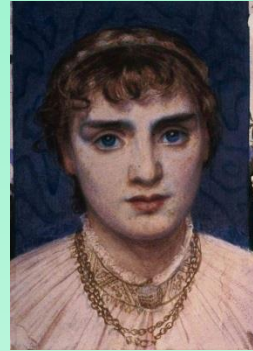
Click on an image to enlarge/shrink



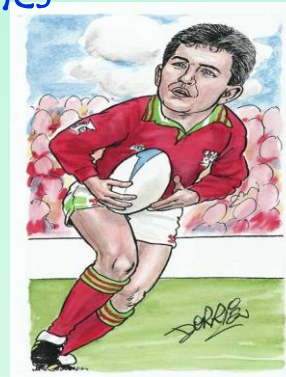
Edward J Poynter –
'Head of a young
woman'



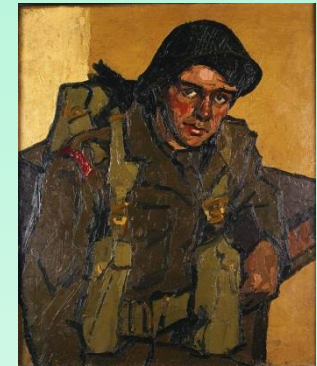
S Harding – 'Colonel
Mytton'



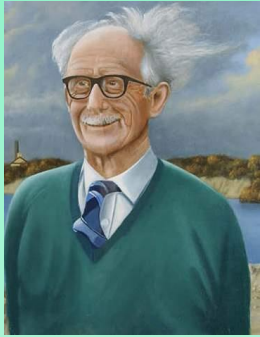
Dorrien – 'Robert
Jones'



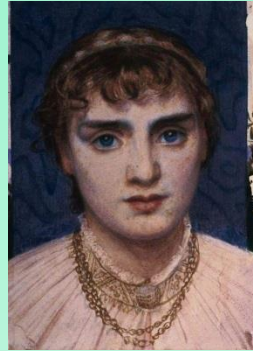
Evan Walters – 'David
Lloyd George'



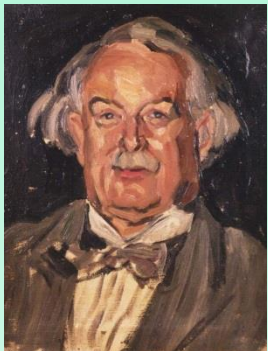
Kyffin Williams –
'Fusilier Dean'



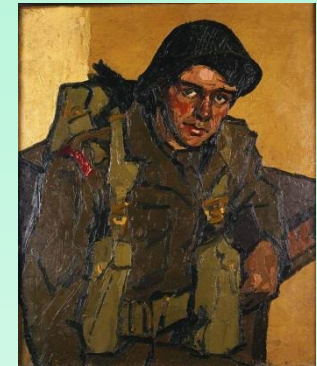
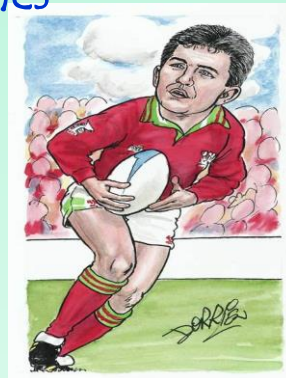
Edward J Poynter –
'Head of a young
woman'



S Harding – 'Colonel
Mytton'



Dorrien – 'Robert
Jones'



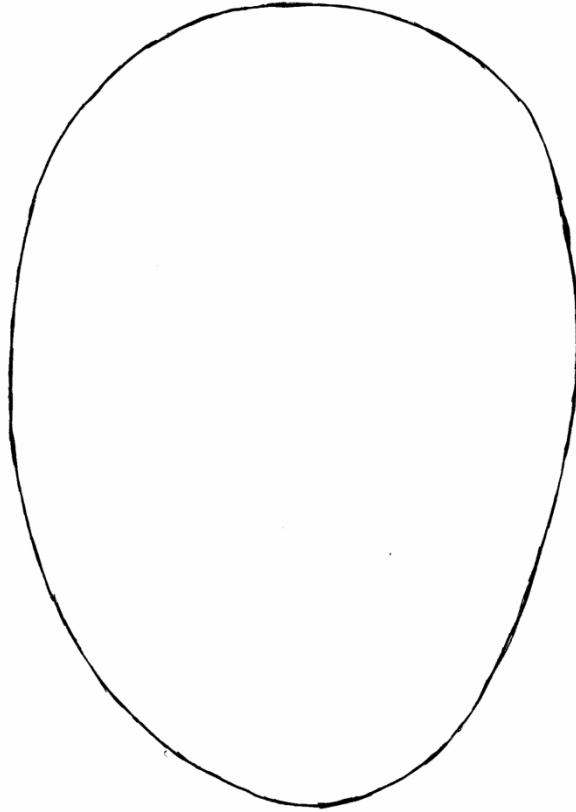
Kyffin Williams –
'Fusilier Dean'

Joseph Chesters –
'Portrait of James
Bentley'

Evan Walters – 'David
Lloyd George'

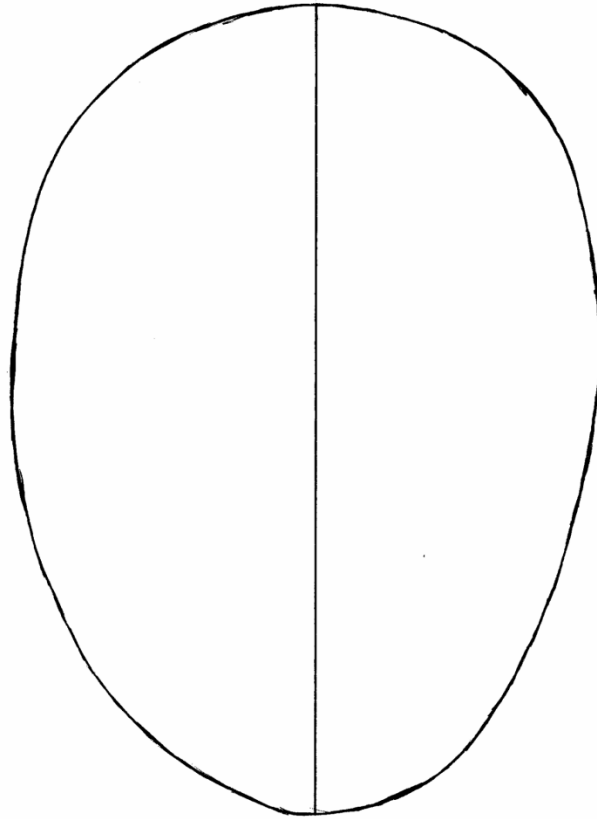
Now follow the step-by-step guide to drawing a portrait.

1.¹ Draw an egg shape (but remember not all faces are egg shaped!)



This bit can be difficult so remember to use your pencil **lightly**, just in case you need to rub out mistakes!

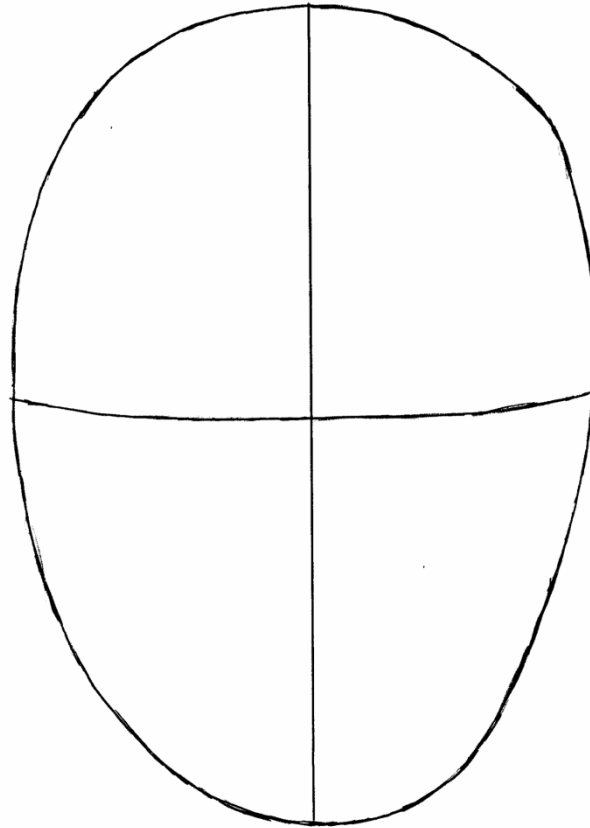
2
2. Draw a centre line vertically right through the centre of the egg



This helps you make sure that you line up the nose, mouth and eyes correctly

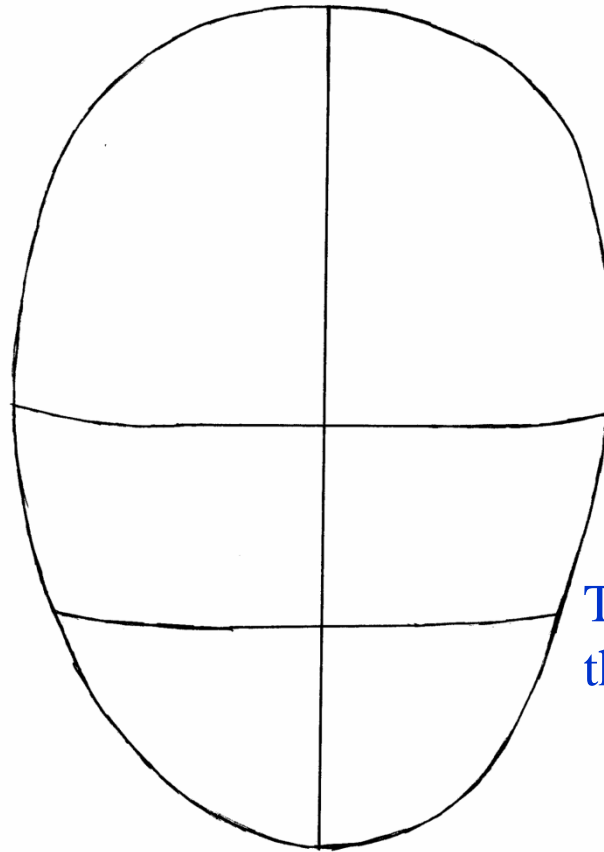
3

3. Draw a horizontal line $\frac{1}{2}$ way down the egg



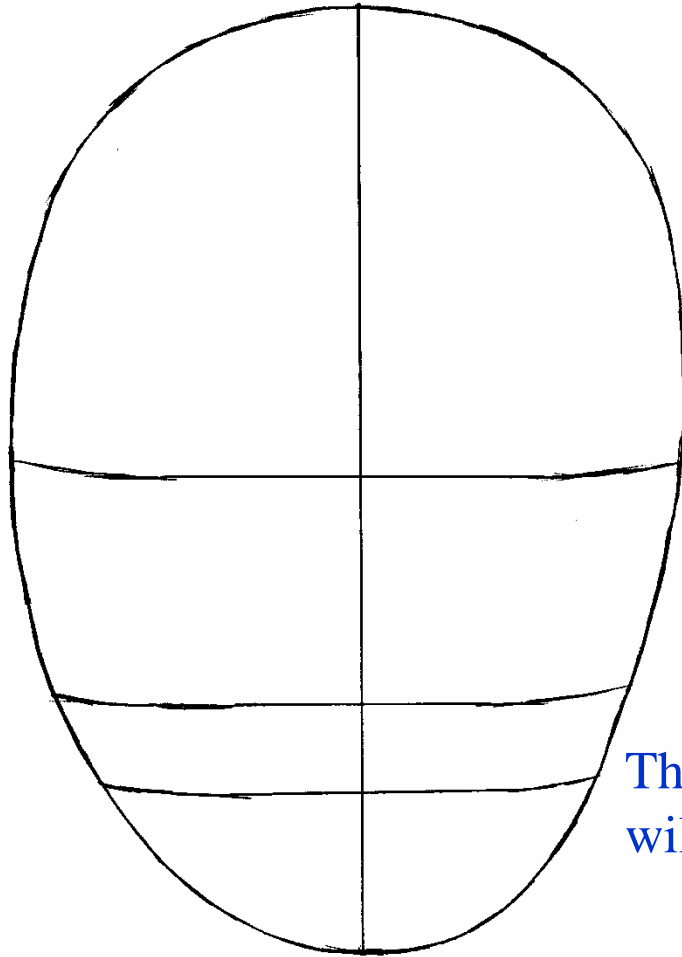
This is where the eyes and top of the ears will go

4. $\frac{1}{2}$ way between the eye line and the chin draw a 2nd horizontal line



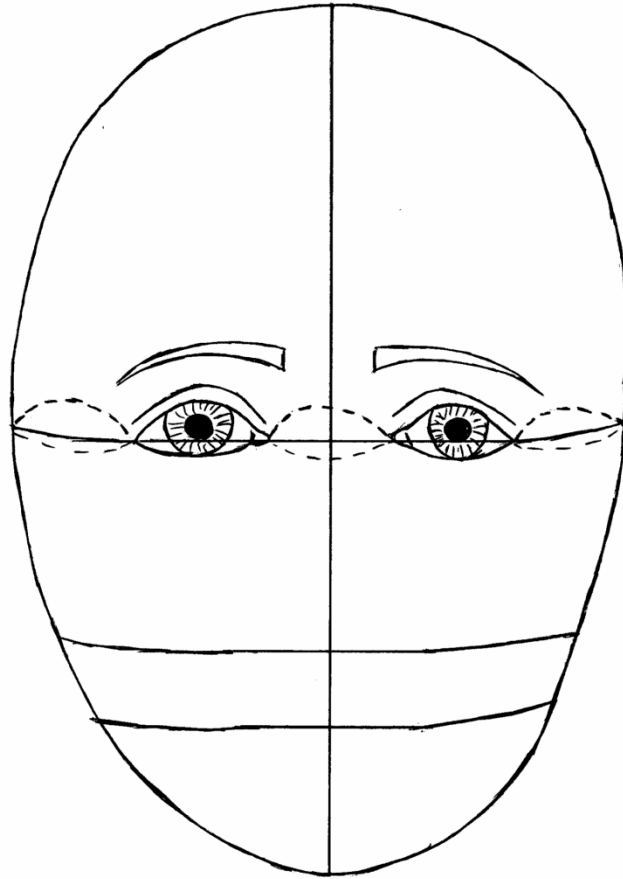
This is where the bottom of the nose and ears will go.

5. 1/3 of the way down from the nose draw a 3rd horizontal line



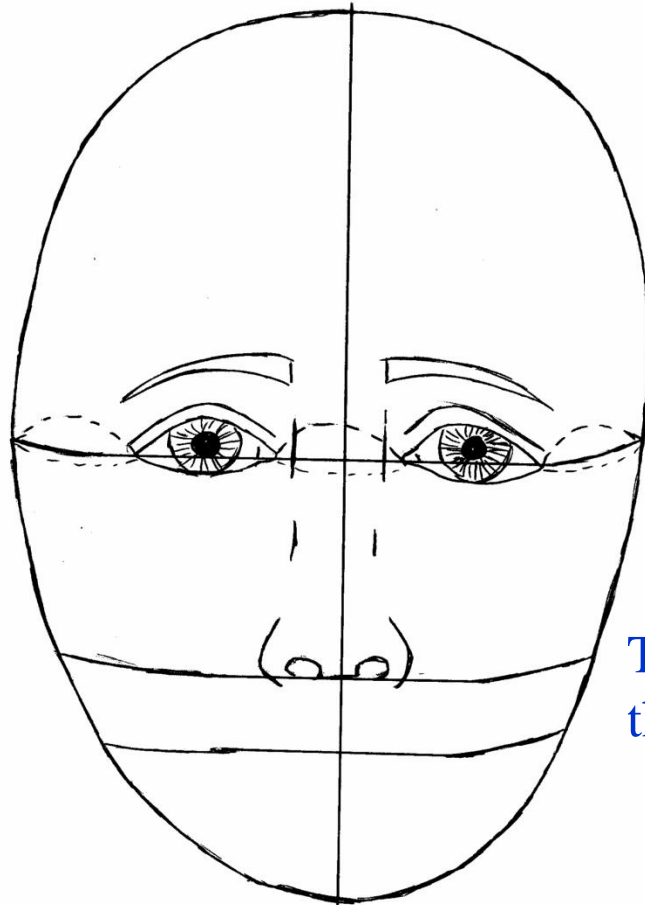
This is where the mouth will go.

6. Draw in the eyes with the corners on the line



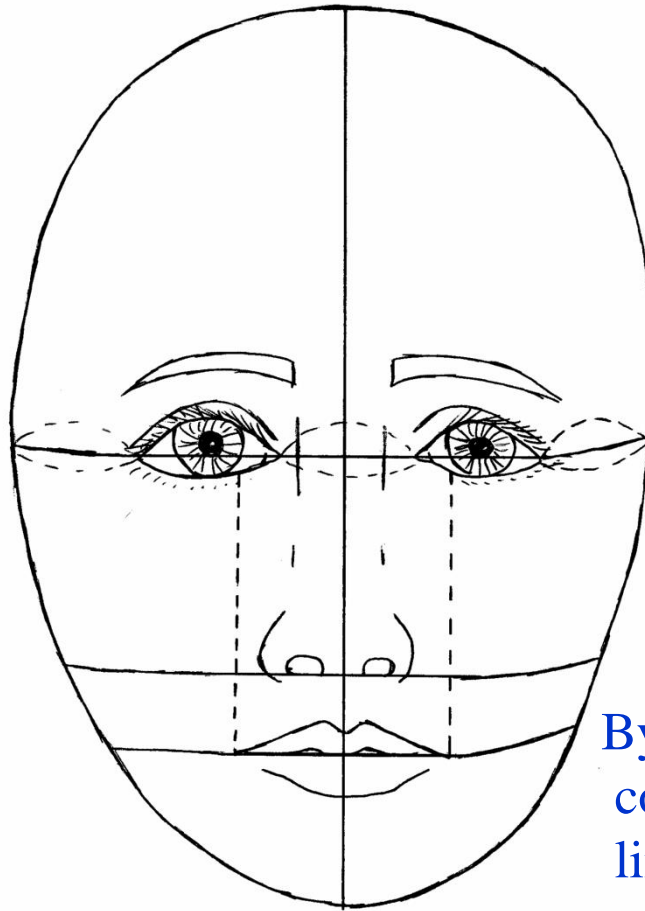
To ensure the eyes are the correct size you should be able to fit 5 equal eye widths across the head.

7. Draw the bottom of the nose



The nostrils should rest on the line.

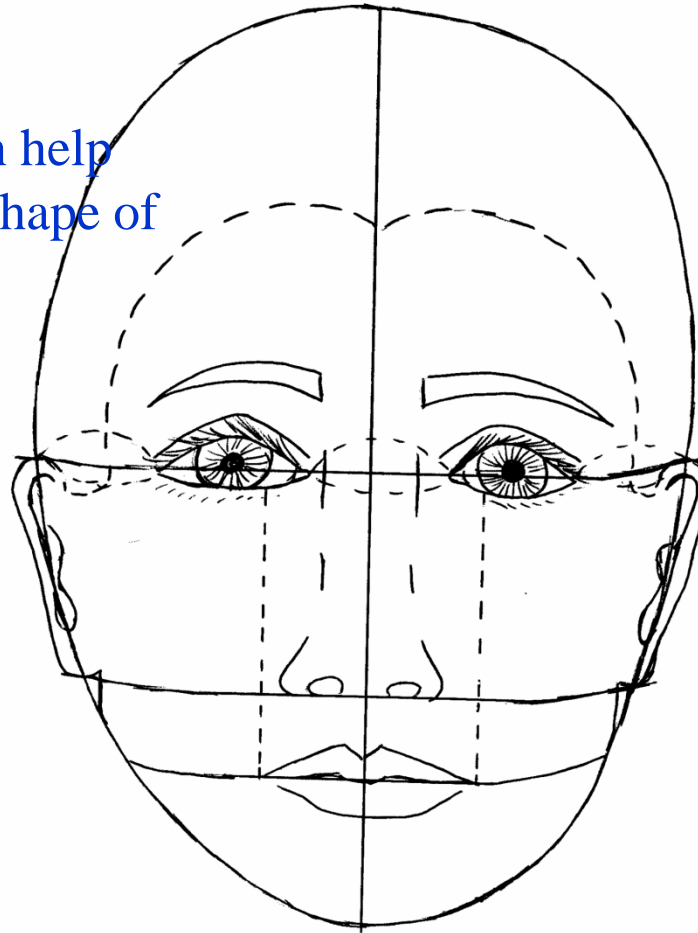
8. Draw in the mouth with the line dividing the 2 lips



By measuring $\frac{1}{3}$ in from the corner of the eye and drawing a line vertically on each side, you can achieve an accurate mouth width

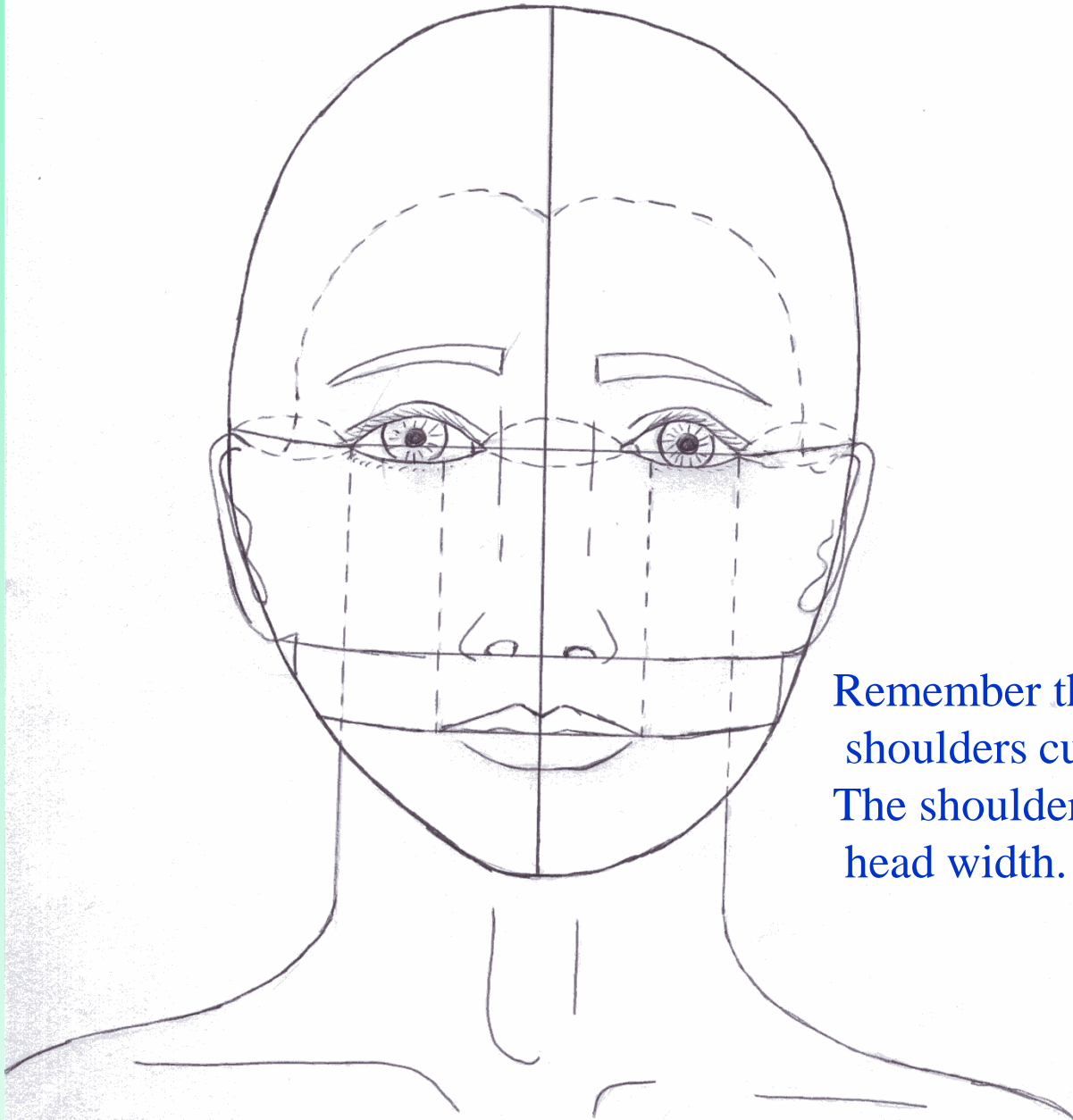
9. Draw in the ears and the hairline

The hairline can help
determine the shape of
the face



Remember the ears
should fit snugly
between the eye and
nose lines

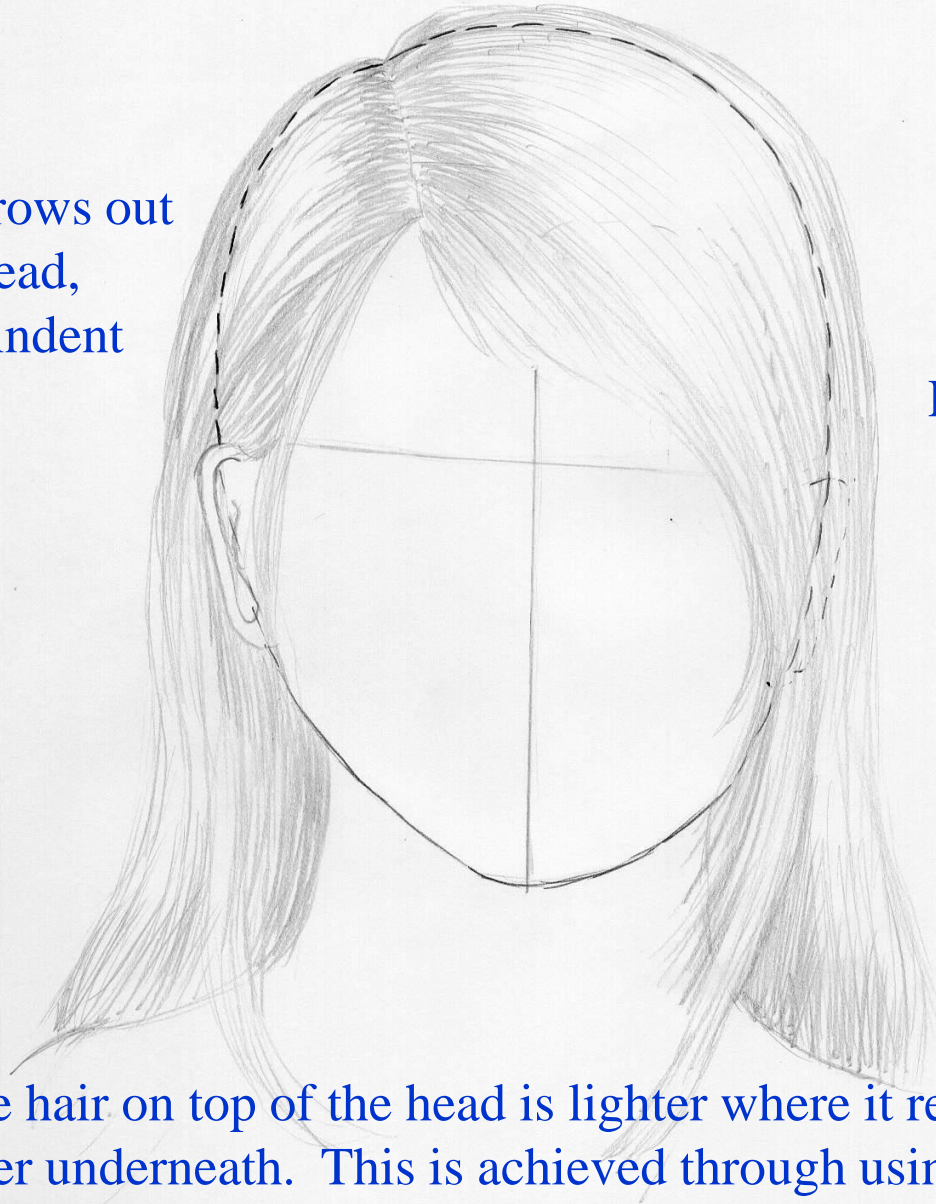
10. Draw the neck by drawing a vertical line from the outer corner of the eye on each side to achieve the correct width



Remember the neck to the shoulders curves gently. The shoulders are 3x the head width.

11. Now add the hairstyle of your choice!

Notice the hair grows out away from the head, appearing as an indent where the hair is parted

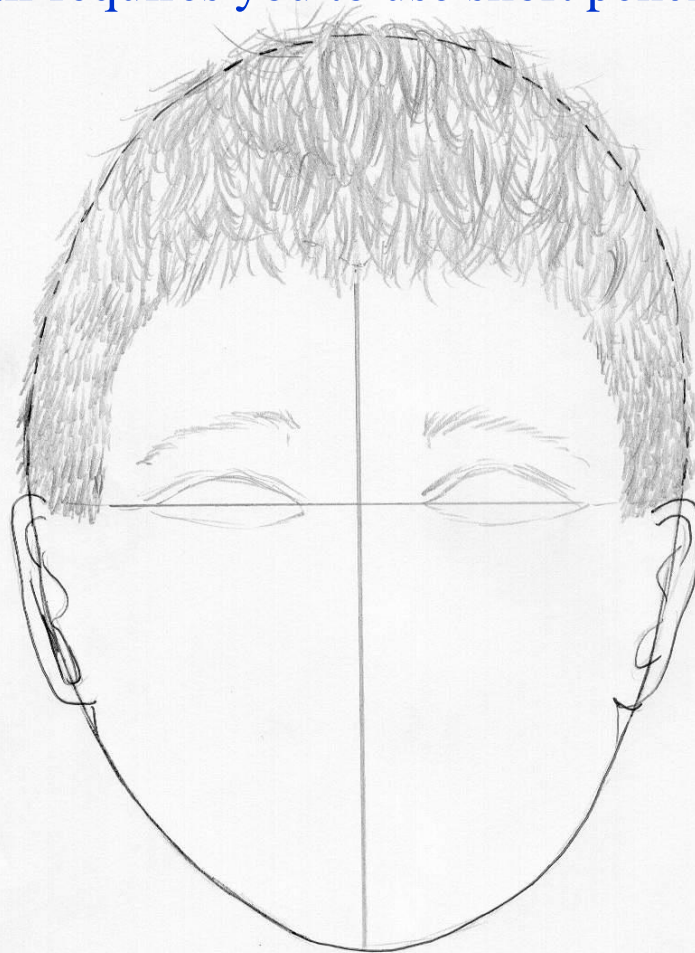


Long hair requires you to make long pencil strokes

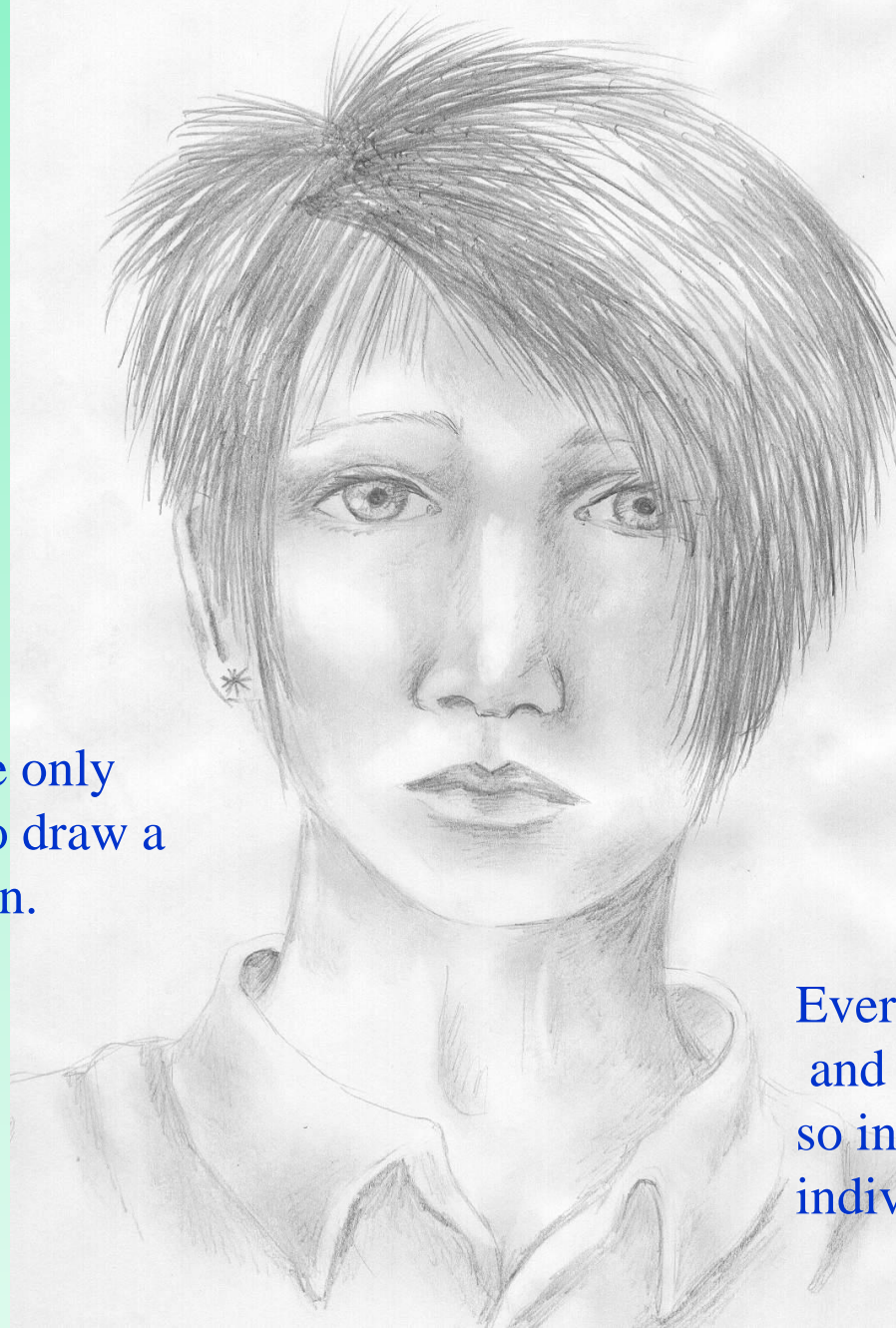
Notice the hair on top of the head is lighter where it reflects the light and darker underneath. This is achieved through using many or few lines accordingly

Short hair requires you to use short pencil strokes

Look carefully at the
different directions
that the hair fall in



12. You can then rub out your guidelines and add tone to give a more realistic appearance



Remember, these are only guidelines in how to draw a portrait in proportion.

Everybody varies slightly and that is what makes us so interesting, unique and individual!